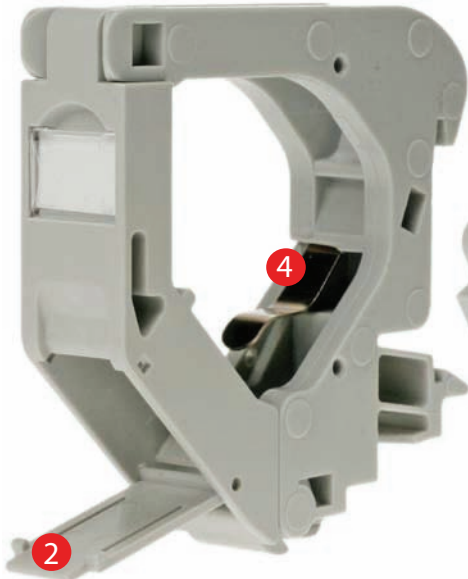


Part.-No.: DRA8IN

w/o 2 side covers, width 18mm



- 1 SIDE COVER (Part# DRA8IC)
- 2 DUST PROTECTION COVER

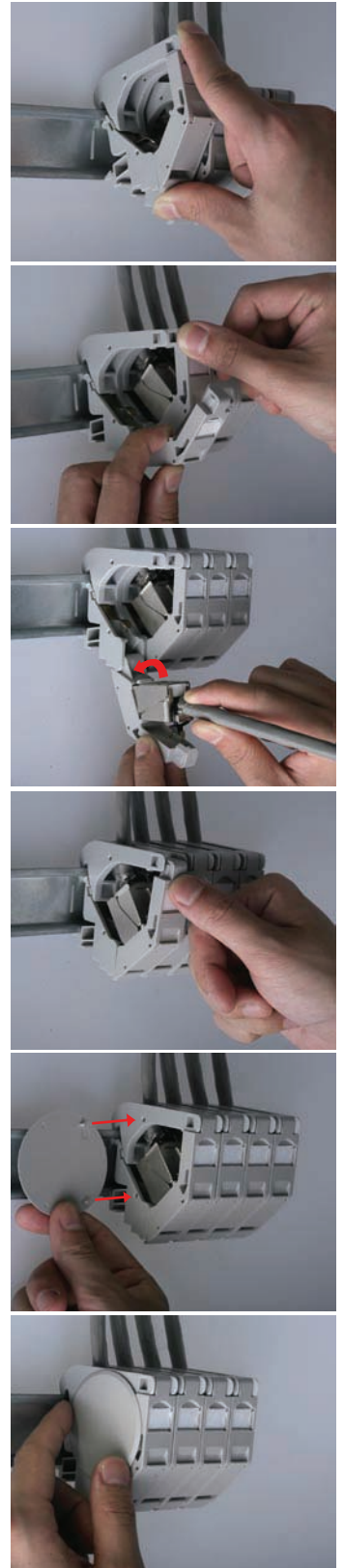
Part.-No.: DRA8IW

with 2 side covers, width 21mm

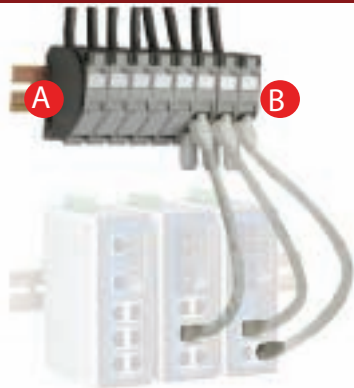


- 3 LABEL WINDOW
- 4 EQUIPOTENTIAL BONDING

INSTALLATION



INDUSTRIAL APPLICATION



Recommend : When more than one module are mounted on the DIN rail, the side covers are applied only for two sides (A & B).

UNLOAD



Slide a slot screwdriver in the opening at the bottom of the modular and use it as a lever to pull out the module from DIN rail.

FEATURES / APPLICATIONS

1. For Industrial network applications
2. Applicable for standard 35mm width DIN rails
3. Fits for modules with a width less than 17mm
4. Equipotential bonding spring contact - removable
5. Label window for identification labels
6. Packaging: 50pcs per inner box / 200pcs per outer box