

Punchdown Blocks - LSA

Technical Spec.:

Electrical:

1. Voltage Rating: 250VDC
2. Current Rating: 1,5A
3. Contact Resistance: 10 mΩ max.
4. Insulation Resistance: 1.000MΩ min. @ 500VDC
5. Dielectric Strength: 1.000 VAC, 60Hz, 1min.



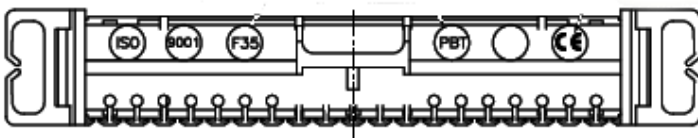
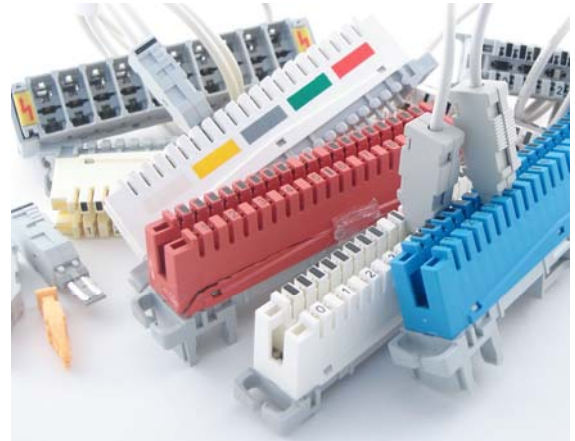
Mechanical:

1. Housing Material: PBT UL94V-0 white or grey
2. Base Material: PBT UL94V-0
3. Contact Material: Phosphor Bronze 0,50mm thickness
4. Plating: Silver 20 or 200µ" over Nickel 30µ"...80µ"
5. Cable Material: solid copper wires Ø 0,4mm...0,8mm
6. Wire: AWG 24-26

Environmental:

1. Storage Temperature: -20°C to +80°C, humidity up to 95%
2. Operational 0°C to 70°C

Note: At part Numbers: XXX = silver plating i.e. 200, 020



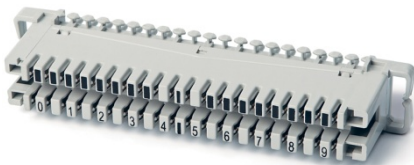
ISO 9001– certificated / CE mark / PBT – material
F35 – date code year + week (H=2008/O=2014) here week35/2005



connection
disconnection

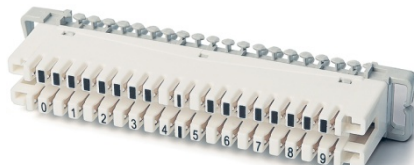
CM10XXX

10 pair connection module



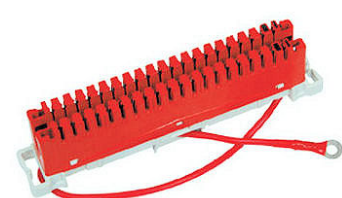
DM10XXX

10 pair disconnection module



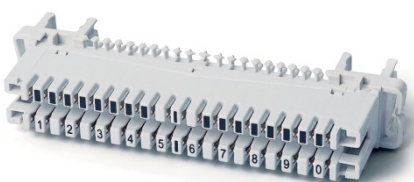
EM10XXX

10 pair earth module



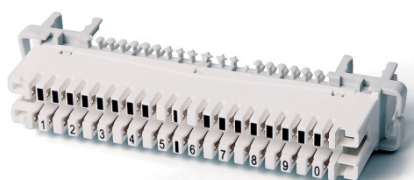
CM10XXXR

10 pair connection module for round profile



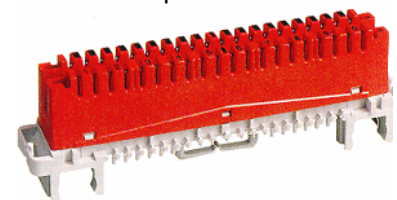
DM10XXXR

10 pair disconnection module for round profile



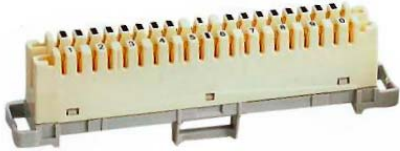
EM10XXXR

10 pair earth module for round profile



DM10020UK

10 pair connection module for UK



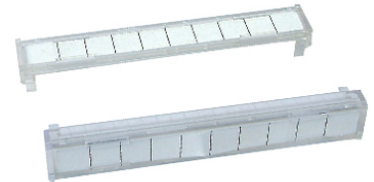
DM10020ZAR

10 pair disconnection module for round profile South Africa



NT___

Numbering and Labeling



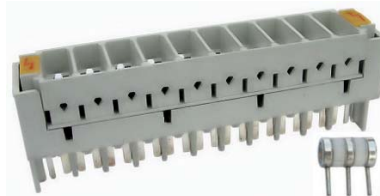
AM2P10

10 pair protection magazine for 2 pole gas tube arrester



AM3P10

10 pair protection magazine for 3 pole gas tube arrester



GTA___

gas tube arrester



DB50

50 pair indoor distribution box



DB30IP54

30 pair outdoor distribution box



CACMP2(4)AP10

patch cable, 2 (4) pole plugs
1,0m



LSPDA01(10)

disconnection plug



LSEB10

10 pair earth bar



TOOLLSA1X

Insertion tool for modules with (S) or without (N) sensor



Headquarters:

Rodheimer Strasse 25h
61191 Rosbach
Germany
Tel: +49 600 392058
Fax: +49 600 392056
Email: contact@inelcotech.com

European Head Office:

Premyslovska 4
13000 Praha-3
Czech Republic
Tel: +420 2 22726337
Fax: +420 2 22724901
Email: europe@inelcotech.com

Asia Head Office:

1206 New Victory House
93 Wing Lok Street, Central
Hongkong (SAR)
Tel: +852 2668 9626
Fax: + 852 3186 5019
Email: asia@inelcotech.com