

## ASSEMBLY INSTRUCTION

### PS88E5I(W) - RJ45 Shielded Cat5e Plug with Insert

#### Prerequisites

- Plug PS88E5I(W) plug housing with insert
- Boot Optional, PHOOD16 for cable OD 6.5 mm, PHOOD2 for cable OD 5.5 mm
- Cable 5 mm < OD < 6.5 mm, 4 twisted pairs, shielded, min. Cat5e, stranded (or solid), wire OD 0.89 mm to 1.09 mm, estimated AWG 26 - 24
- Tool Handtool K750 or die set U149 for pneumatic crimp machine from bex



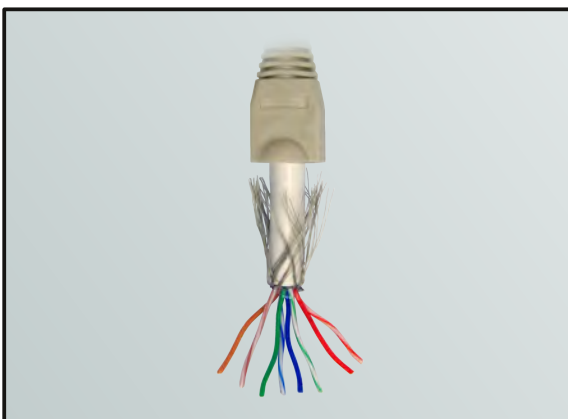
#### Step 1

- Slide the hood over the cable
- Strip the cable insulation > 20 mm



#### Step 2

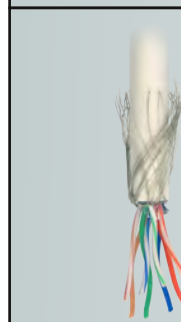
- Turn the braid back over the cable
- Separate the pairs of wire



#### Step 3

- Score the foil at a length of 2 mm
- Peel it off, assure all wires are intact

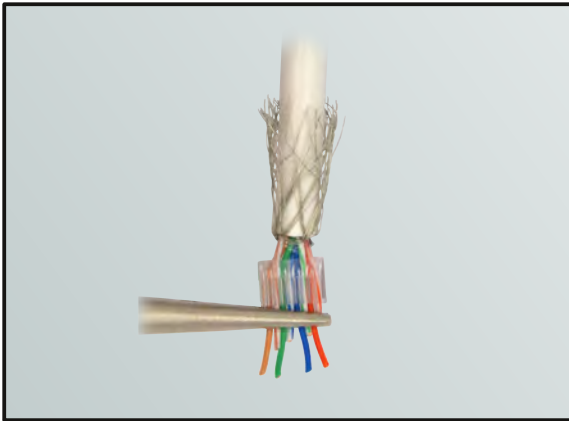
#### Wiring Scheme: TIA 568 B



- 1: white/ orange
- 2: orange solid
- 3: white/ green
- 4: blue solid
- 5: white/ blue
- 6: green solid
- 7: white/brown
- 8: brown solid

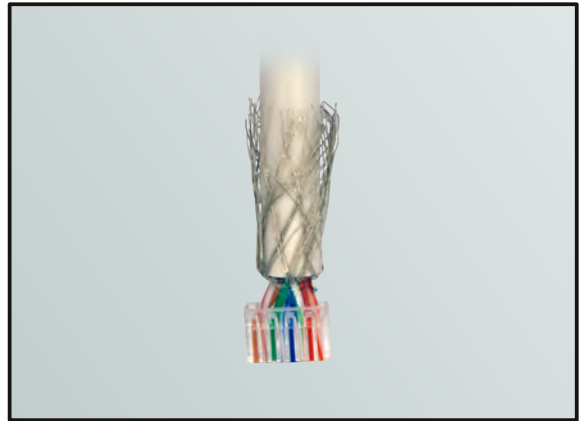
#### Step 4

- Arrange the wires matching TIA 568 B
- Cut the white colored wires by 5 mm



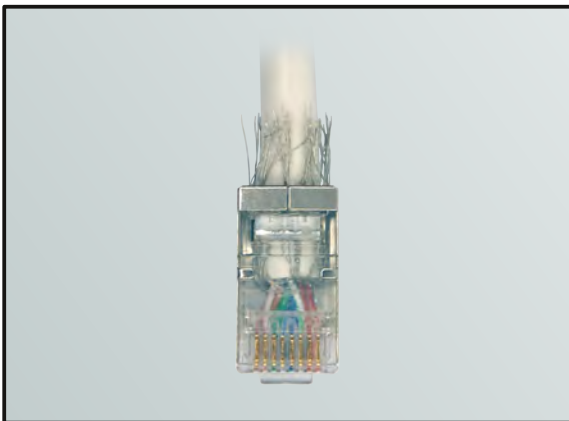
**Step 5**

- Thread the wires through the insert
- Pull the wires completely through



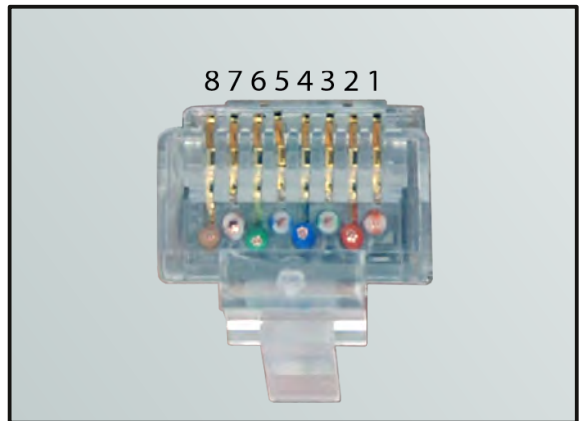
**Step 6**

- Cut them straight at the insert's edge
- Hold the insert's open side upwards



**Step 7**

- Hold the plug with contacts upwards
- Press the cable jacket into the plug



**Step 8**

- Assure that the strain relief is over the cable's jacket and all wires are at front



**Step 9**

- Crimp the plug with handtool K750
- Cut off the overlapping braid wires



**Step 10**

- Control contacting and strain relief
- Slide the hood over the plug