

ASSEMBLY INSTRUCTION

PS88A6M - RJ45 Cat6 Shielded Premium Plug

Prerequisites

- Plug PS88A6M, insert WMBA6M-08/ -10/ -11
- Hood Optional, PC-A6M or PCPA6M65 for cable OD 6.5 mm (PCPA6M75 for 7.5 mm)
- Cable OD < 6.5 mm, 4 twisted pairs, shielded, min. Cat6, stranded or solid wires, max. wire OD acc. to insert: 0.80 mm, 1.00 mm or 1.15 mm to max. 0.2 mm less
- Tool Handtool K791 or air crimper machine with insert U137 from bex



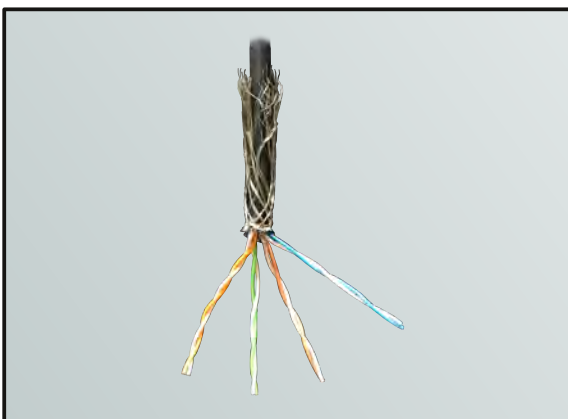
Step 1

- Slide the hood over the cable
- Strip the cable isolation by 50 mm



Step 2

- Turn the braid back over the cable
- Separate the pairs of wires



Step 3

- Score the foil at a length of 2 mm, peel it off and assure all wires are intact

Wiring Scheme: TIA 568 B	
	1: white/ orange
	2: orange solid
	3: white/ green
	4: blue solid
	5: white/ blue
	6: green solid
	7: white/brown
	8: brown solid

Step 4

- Untwist and straighten the wires
- Arrange the wires acc. to TIA 586 B



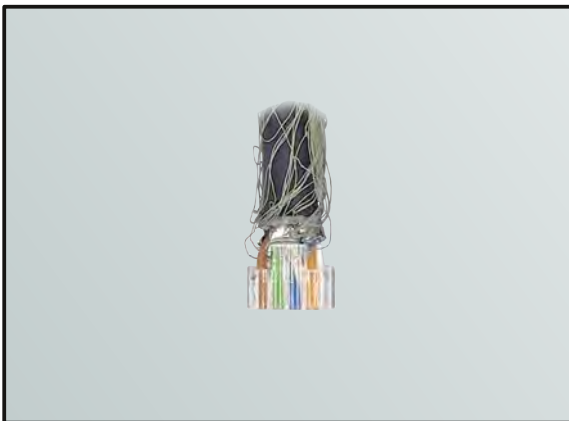
Step 5

- Cut the wires diagonal for insertion
- Hold the insert's open side upwards



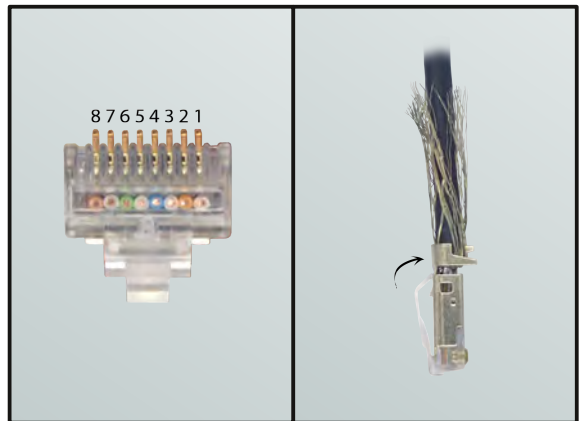
Step 6

- Thread all wires completely through the insert's holes



Step 7

- Cut the wires straight at insert's edge
- Hold the plug with contacts upwards



Step 8

- Push insert in plug until wires at front
- Bend the strain relief to the cable



Step 9

- Crimp the plug with handtool K791
- Cut off the overlapping braid wires



Step 10

- Control contacting and strain relief
- Slide the hood over the plug