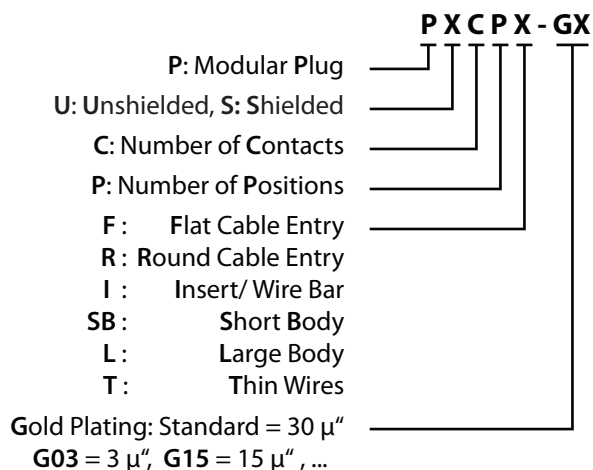
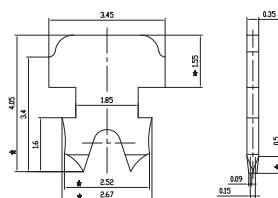


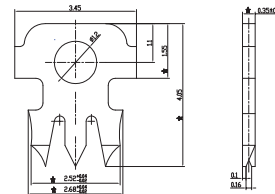
## Plugs



standard contact  
for stranded wires

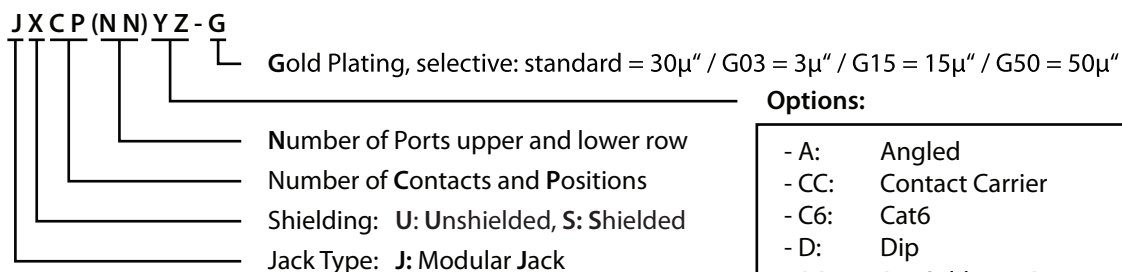


option: contact  
for solid wires



hole inside at high speed versions

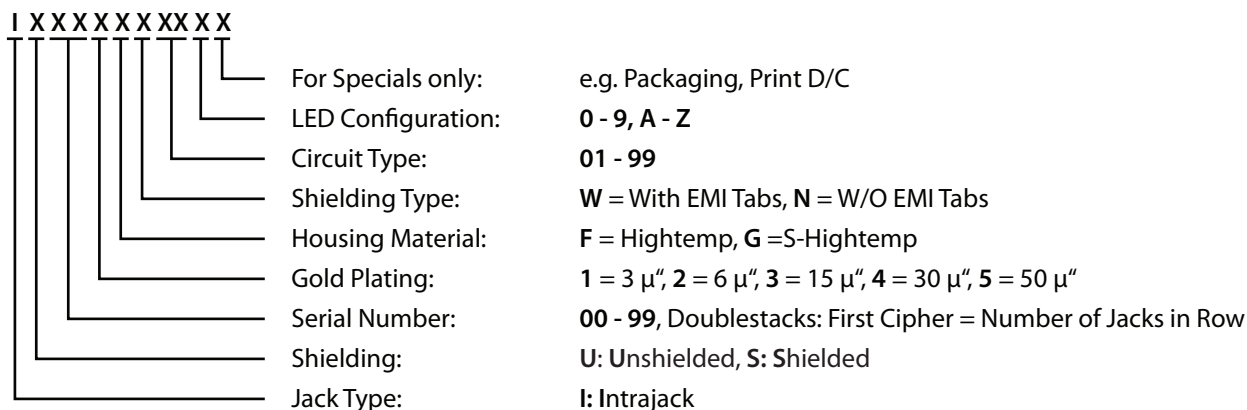
## ModJacks



### Options:

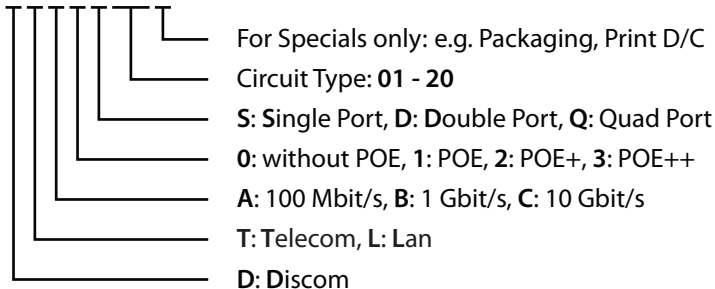
- A: Angled
- CC: Contact Carrier
- C6: Cat6
- D: Dip
- DP: Dip Soldering Peg
- EDGE: Card Edge
- E5: Cat5e
- FE: Ferrum
- H: Horizontal
- LL: With LEDs
- LP: Low Profile
- LU: Latch Up
- O: High Profile
- PF: Front Peg
- Q: Economy Version
- SB: Short Body
- SMT: Surface Mounted Technology
- SW: Switch
- T6: Enhanced Shield with EMI-Tabs
- V: Vertical (Top Entry)
- W: White
- Z: Press Fit

## IntraJacks



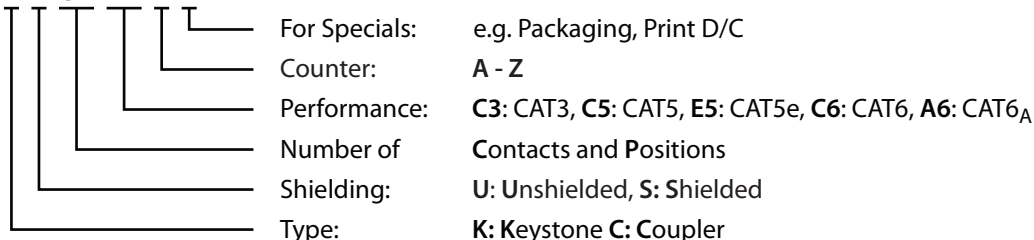
## Discom

**D X X X X X X X**



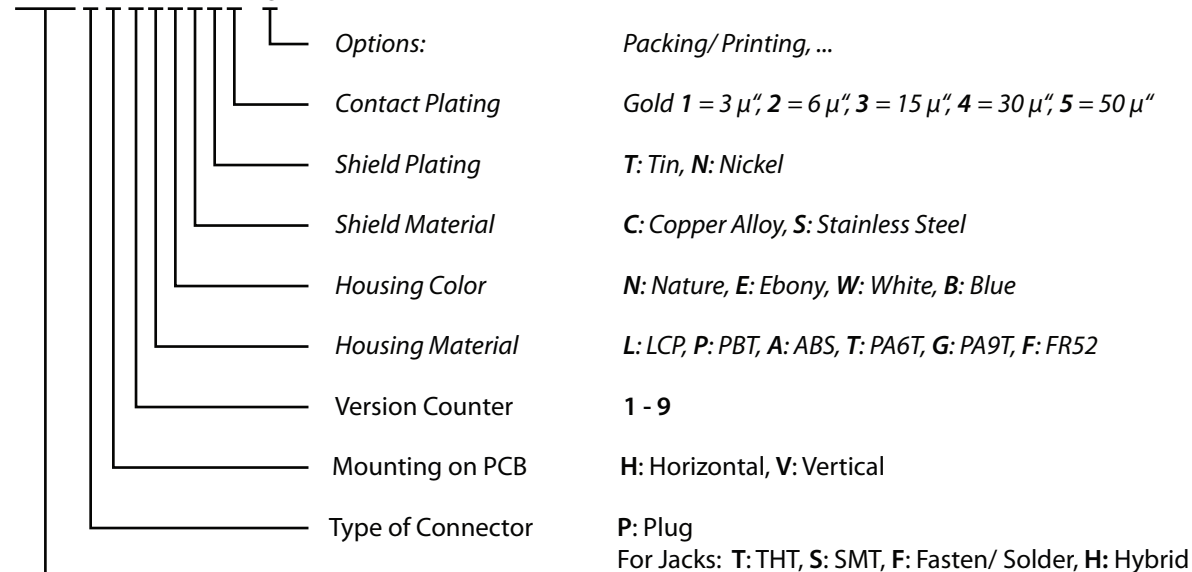
## Keystones & Coupler

**X X C P X X X X**



## USB

**XXXX X X X X X X X X - O**

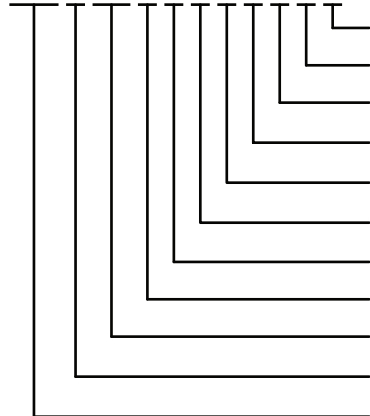


<b>U</b>	USB
<b>2/ 3</b>	Version (2.0/ 3.0 = 3.1)
<b>A/ B/ C</b>	Type of USB Connector
<b>S/ P/ M/ X/ U/ 1/ 2</b>	Standard/ Powered/ Mini 5 Pin / Mini 10 Pin/ Micro/ Generation

## SFP

For Cages Only

**SFP X NN X L E H T X X O**

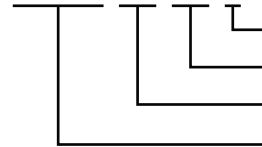


Options	i.e. Top Open/ Seal
Gold Plating Contacts	1 = 3 μ", 2 = 6 μ", 3 = 15 μ", 4 = 30 μ", 5 = 50 μ"
Cage Plating	Tin or Nickel
T/ A	Tiny Feet/ Arc Tiny Feet
H	Heat Sink, diff. Heights
F/ G/ C	EMI Fingers/ Elastomeric Gasket/ Clip
L/ I/ A/ B	Light Pipes; Doublestack: Inner/ Outer/ Both
Connection Type	Solder or Press Fit
Number of Rows and Quantity of Ports in each Row	
Component	X: Cage & Connector, C: Cage, J: Connector
Type of SFP	

SFP	SFP (Small Formfactor Pluggable)
SFPP	SFP Plus
QSFP	Quad SFP
QSFP	Quad SFP Plus
XFP	

## Screws

**SCREW XX YY Z**



Options	
Quantity of Connectors	
Pitch	
Screw-Terminal	

35:	3.50 mm
38:	3.81 mm
45:	4.50 mm
50:	5.08 mm
63:	6.35 mm

## PDB/ IDC

**PDB X Y (Px)**



Y:	Style
X:	Quantity of Connectors
PDB:	PunchDown Block

0:	Straight Contacts (0°)
A:	Angled Contacts (45°)
S:	Stackable Block
B:	Batched Contacts (CAT5e)

**IDC110X** X: Quantity of Pairs

## LSA

**XM YY ZZZ (Q) O**



O:	Options
R/S:	Round Profile/ Screw fastening
ZZZ:	Silver Plating in μ"
YY:	Quantity of Connectorpairs
CM:	Connection Module
DM:	Disconnection Module
EM:	Earth Rail Module
AM:	Arrestor Magazine
DB:	Distribution Box

## Fiber Connectors/ Adaptors

